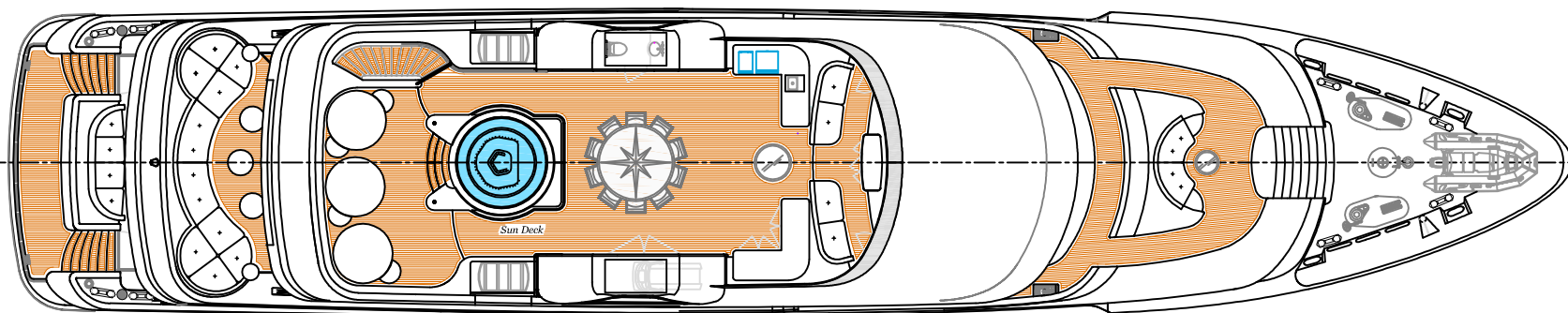
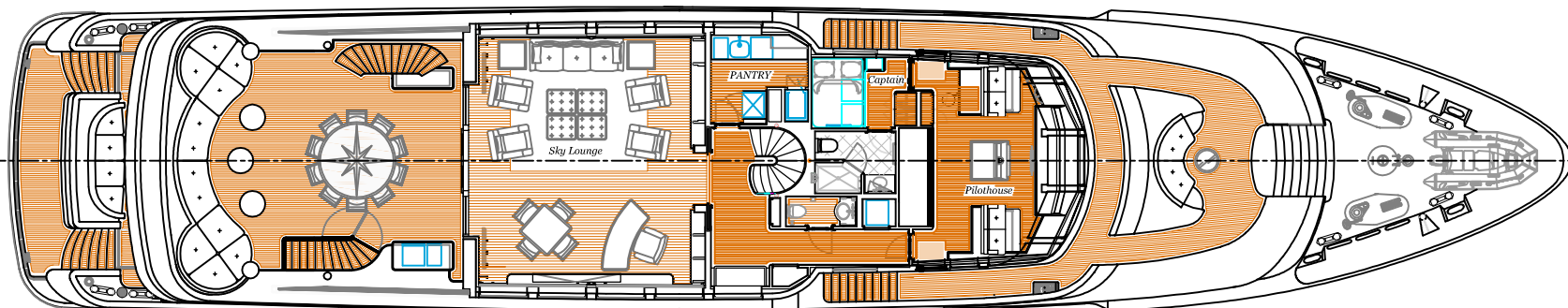


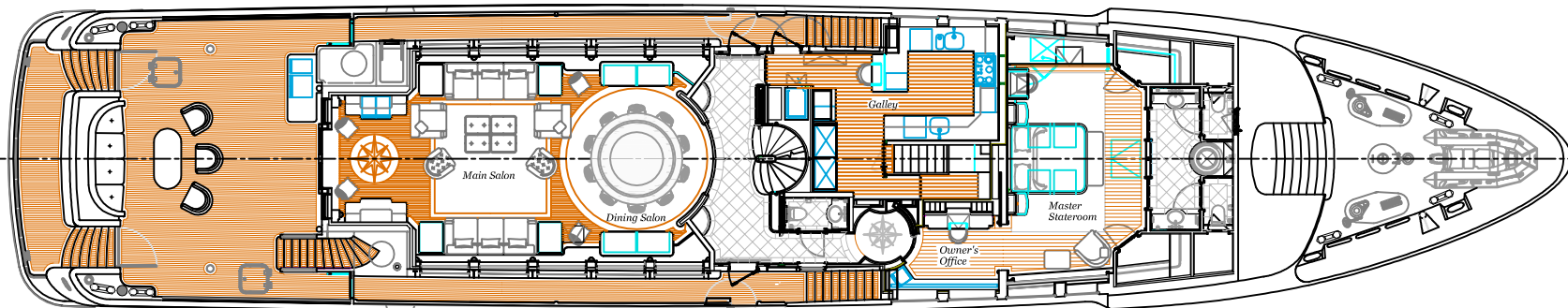
PROFILE



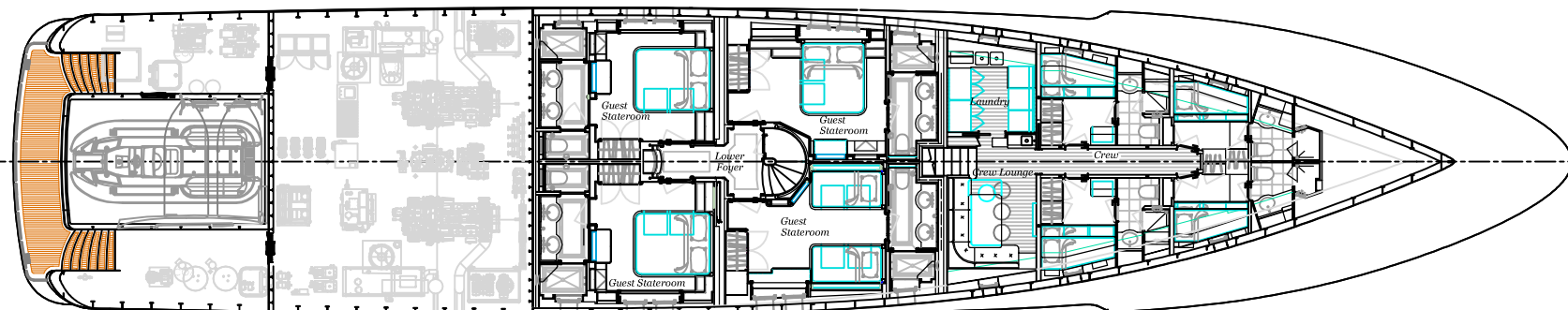
SUN DECK



BRIDGE DECK



MAIN DECK



LOWER DECK

43M TRI-DECK MOTOR YACHT
 LOA: 43.3M (142'-3") DWL: 38.8M (127'-6") BEAM OVERALL: 8.9M (29'-2") DRAFT: 2.1M (7'-0")