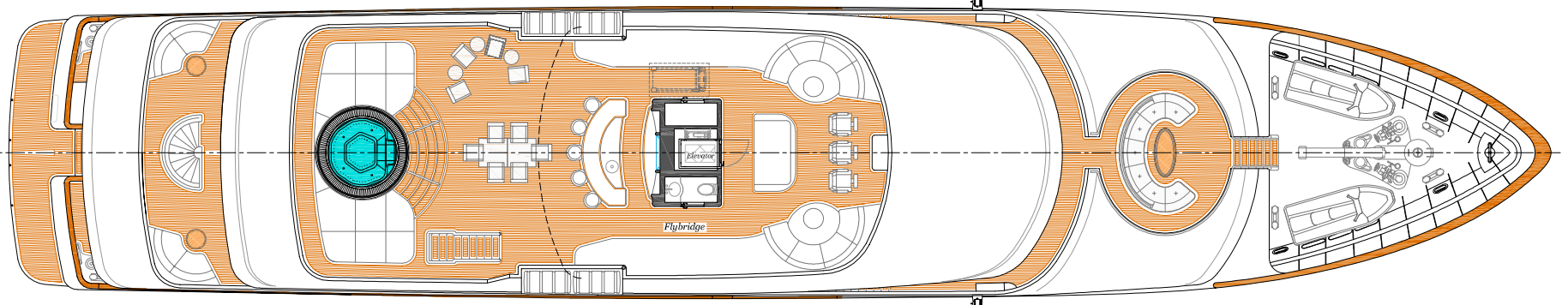
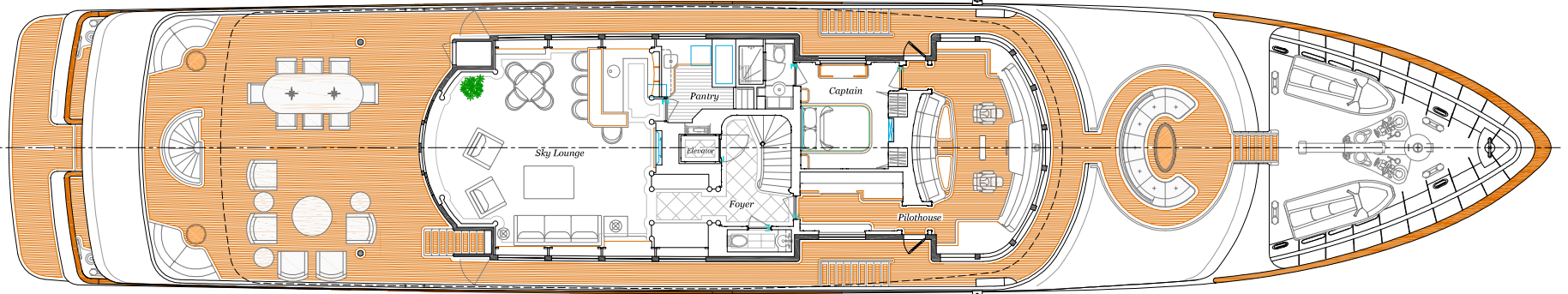


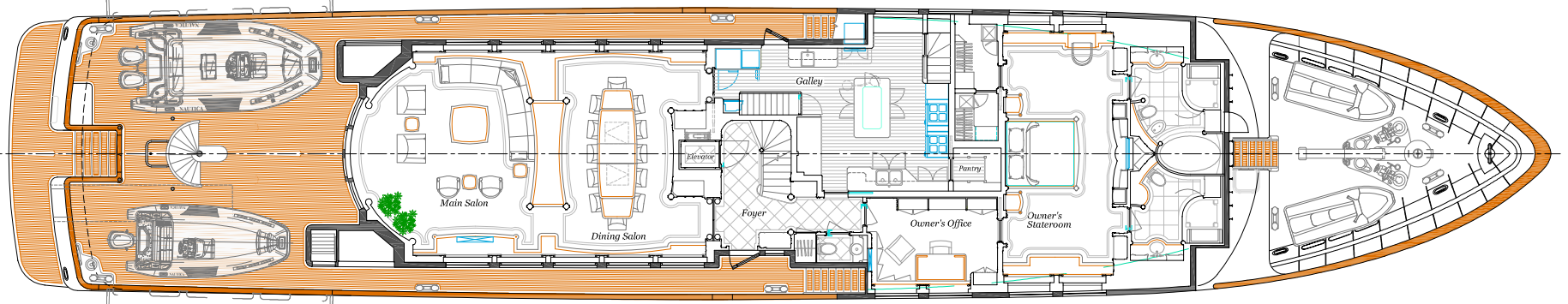
PROFILE



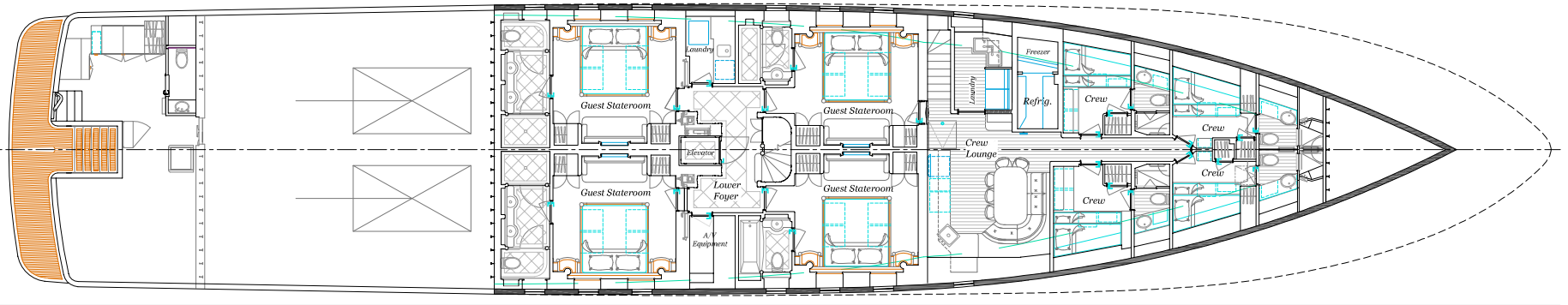
SUN DECK



BRIDGE DECK



MAIN DECK



LOWER DECK

47M TRI-DECK MOTOR YACHT  
 LOA: 46.6M (152'-9") DWL: 41.6M (136'-5") BEAM OVERALL: 9.1M (29'-8") DRAFT (HALF LOAD): 2.2M (7'-3") DRAFT (FULL LOAD): 2.3M (7'-6")