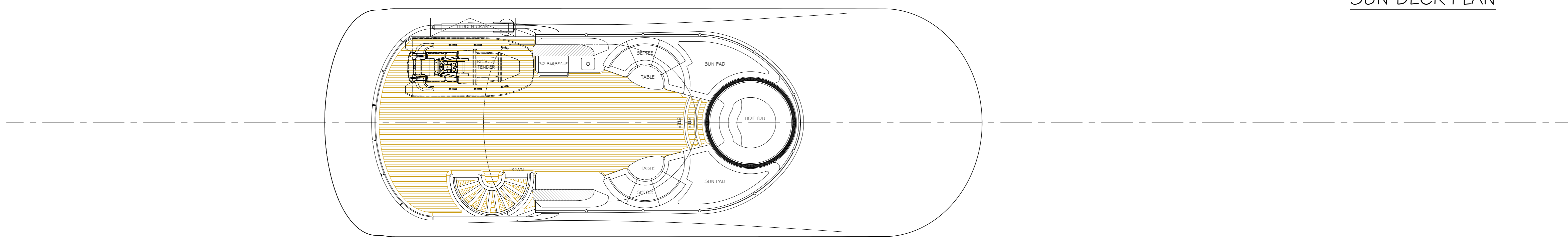
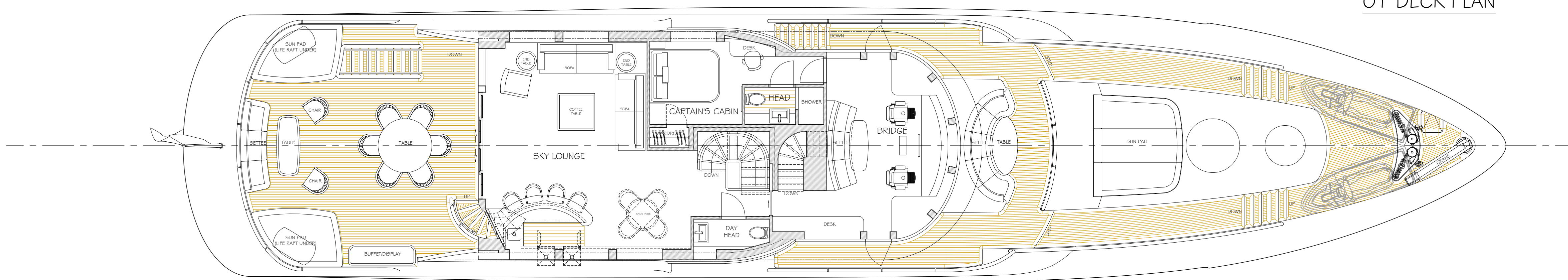


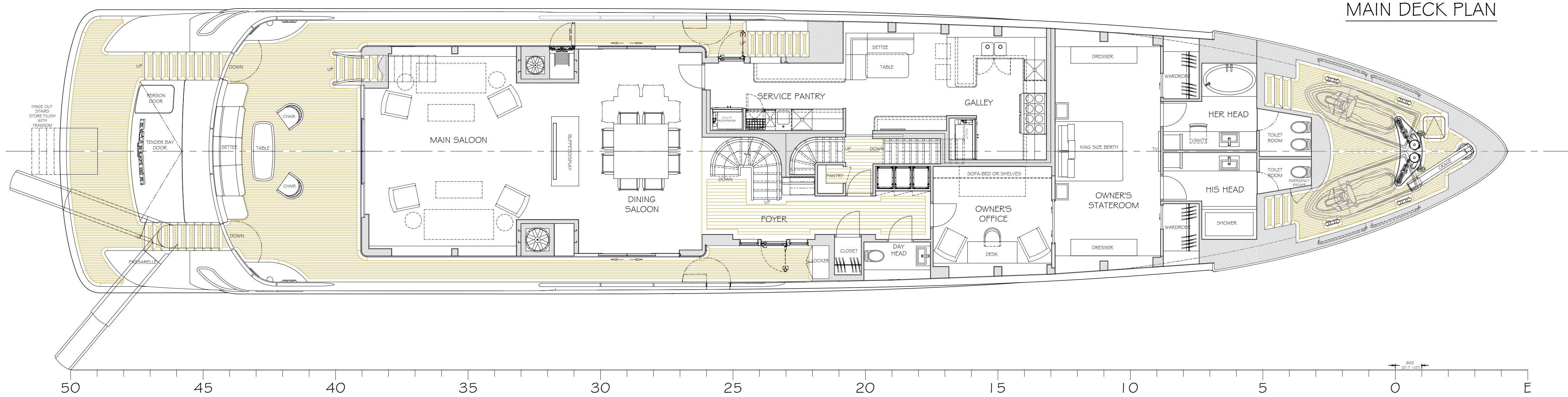
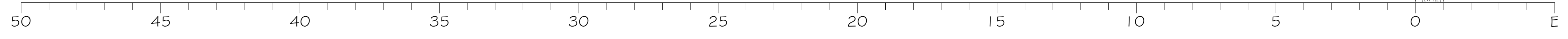
OUTBOARD PROFILE



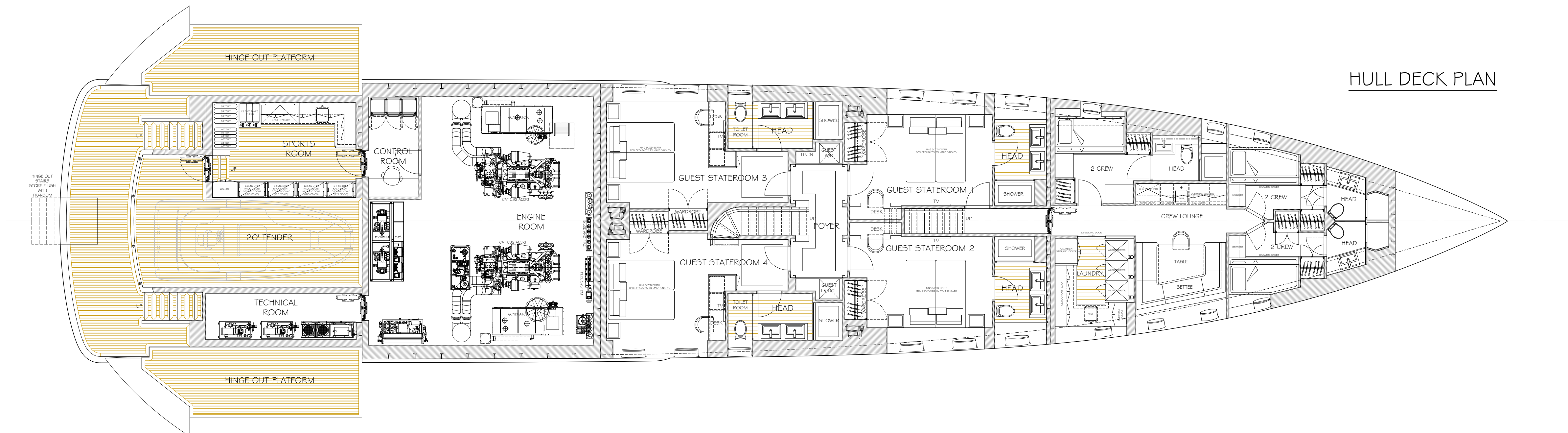
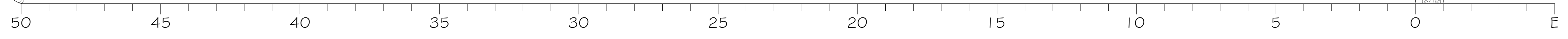
SUN DECK PLAN



O1 DECK PLAN



MAIN DECK PLAN



HULL DECK PLAN

44M MOTOR YACHT

LOA: 43.74M (143'-6") BEAM MOLDED: 8.43M (27'-8") BEAM OVERALL: 8.48M (27'-10") DRAFT (HALF LOAD): 2.13M (7'-0")

