

YARD NEWS

BURGER CONTINUES TO SET THE PACE

Vol. I, No. 16

BURGER BOAT CO., INC. — MANITOWOC, WISCONSIN

Summer, 1962



Henry C. Burger

HENRY C. BURGER Was Summoned June 5, 1962

Henry C. Burger, Director of Burger Boat Co., Inc. and former President of the Burger Boat Co. passed away suddenly June 5, 1962 at the age of 69. His integrity, rugged determination and great pride in family tradition will long be remembered by his many friends in the yachting world.

During his long tenure as President, Henry C. Burger was the leader in many major yachting developments. Under his guidance, Burger built the first electrically welded steel yachts. He was the motivating force in the construction of this country's first and largest all-aluminum cruisers and sailboats.

Death came to Henry C. Burger 99 years after the first Henry Burger began building boats at Manitowoc, Wisconsin. He served the company as president for nearly half its century of existence. He took the helm in 1915 following the death of his father Henry B. Burger. In 1959, the firm was reorganized and his son, Henry E. Burger, became President of Burger Boat Co., Inc. During the past three years, Henry C. Burger has remained active at the Yard. He maintained a regular office schedule while serving the Yard in an advisory capacity.

The fine tradition behind the name Burger in yachting today was built during that 1915 to 1959 period under the guidance of Henry C. Burger, with his two brothers, George M. Burger and Walter W. Burger, and a sister, Caroline Burger. That family tradition will be carried on by the present management of his son, Henry E. Burger as President, and Elias Gunnell, son-in-law of George M. Burger, as Vice President.

While Henry C. Burger is gone, his love of family, his efforts in business, his pioneering in yachting have left permanent influences on all those associated with him.

ABLE LOVE To Cruise Lakes

63' Aluminum Cruiser Launched During Busy Spring At Yard

In a flurry of springtime activity at the Yard, one of the first boats launched was Albert M. Stein's ABLE LOVE. This 63' all-aluminum cruiser took to the water beautifully in ceremonies at Manitowoc on May 7. A large party from the Chicago area was present for the launching with christening honors going to Mrs. Richard Glaser of Glencoe, Illinois.

Great Lakes Boat

ABLE LOVE's distinctive royal blue hull will be admired by scores of Great Lakes' yachtsmen this summer. The cruiser's home port of Lake Forest, Illinois was

the first destination of her new skipper, Captain Bob Crandell. During the summer months, ABLE LOVE will berth at Charlevoix, Michigan. Mr. Stein plans to cruise the Lakes extensively, swinging up to the North Channel of Lake Huron and into Lake Superior.

23 Knots Top Speed

Powered by two GM 8V-71 diesels that develop 334 horsepower each, ABLE LOVE will cruise at 17 knots with a top speed of 23 knots. Her aluminum alloy hull is 63'3" long with a 16' beam and 4' draft.

(Continued on page 3)

STEEL TO ALUMINUM

Mr. Stein is another Burger owner making the transition from steel to aluminum. ABLE LOVE is his third yacht and his second Burger. He previously owned a 53' Burger in steel, this was the original PAT-E-JAY II which Mr. Stein purchased three years ago. The fact that a short wave "ham" radio receiver and transmitter are installed on the ABLE LOVE gives a clue to the source of her name. Since his first name is Albert, (AL) ABLE LOVE are the phonetic call letters Mr. Stein uses in pursuing his "ham radio" interest.

First Burger 57 Is Launched

The first in what promises to be a long line of Burger 57' cruisers in aluminum was launched at the Yard late in May. Christened SUITSUS III, she was built for Mr. Floyd J. Voight of Madison, Wisconsin and Fort Lauderdale, Florida.

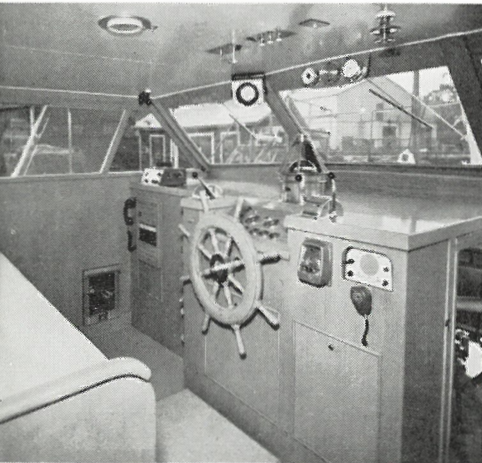
Mr. Voight is not only the owner but also the able skipper of this trim and roomy 57 footer. With his family aboard and his son, W. Craig Voight, as crew; he plans to cruise the Great Lakes extensively this summer. When cold winds start to blow, Mr. Voight will take SUITSUS III to her home port at Lauderdale Yacht Club in Fort Lauderdale, Florida.

The interior decoration of this (Continued on page 4)



ABLE LOVE . . . beautiful, blue, Burger in Aluminum

Despite the chill of early May in Manitowoc, a large party was present for the launching. From the left: sponsor Mrs. Richard Glaser, owner Mr. Albert M. Stein, Mr. and Mrs. M. G. Schamberg, Mr. and Mrs. Sanford J. Rose, of Chicago, Mrs. Muller of Lake Charles, Louisiana, Mr. Benjamin Davis, Mr. and Mrs. Harvey Schram of Chicago, Mr. William Heymann, Mr. and Mrs. F. M. Wright, Mrs. Benjamin Davis, Mr. and Mrs. Nathan Cummings and Captain Robert Crandell.



Well equipped wheelhouse



Looking forward in deckhouse



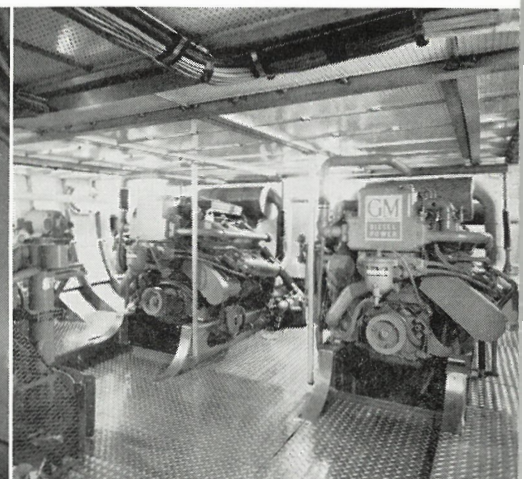
After end of deckhouse



Galley and dinette



Master stateroom



Efficient engine room

NEW SIZE BURGER IN ALUMINUM . . . 68 CRUISER

Shown here are plans for a new standard size Burger in aluminum . . . a spacious 68' cruiser. This S. & S. designed hull offers so many attractive possibilities it's going to give many owners the new yacht urge. It is positioned nicely in Burger's line of standard hulls . . . berthed right between the standard 63' and the 72' cruiser.

Combining the advantages of aluminum construction and integral built tanks, the standard 68' Burger plan calls for **three** full staterooms and **two** full baths in the owner-guest quarters. All staterooms feature twin berths with built-in dressers and ample lockers.

Deckhouse privacy is maximized by the use of a curved stairway leading forward to the dinette and crew's quarters.

Overall length of her aluminum alloy hull is 68' 3½", beam - 17', draft - 4' 6". Powered by twin GM 6-71 diesels, she is equipped with an Onan 12 KW Generator.

ABLE LOVE

(Continued from page 1)

Spacious Quarters

Burger's increasing know-how on the space advantages of aluminum construction is evident in the comfort of the quarters on this 63 footer. There is a beam wide owner's stateroom and a spacious guests' stateroom with a bath for each. Crew's quarters provide ample space for three with another bath.

The comfortable deckhouse is beautifully finished and features Thai silk upholstered chairs along with elegant tables and lamps made for Mr. Stein in Hong Kong. A stereo tape recorder is installed in the deckhouse with speakers located throughout the yacht. All living quarters are equipped with Berko electric heaters.

The spacious afterdeck should be a favorite entertainment area. Over 15' in length, it combines the beauty of teak decks with the comfort and convenience of upholstered built-in seats, Formica-top fiberglass interior ice box and Dacron side curtains.

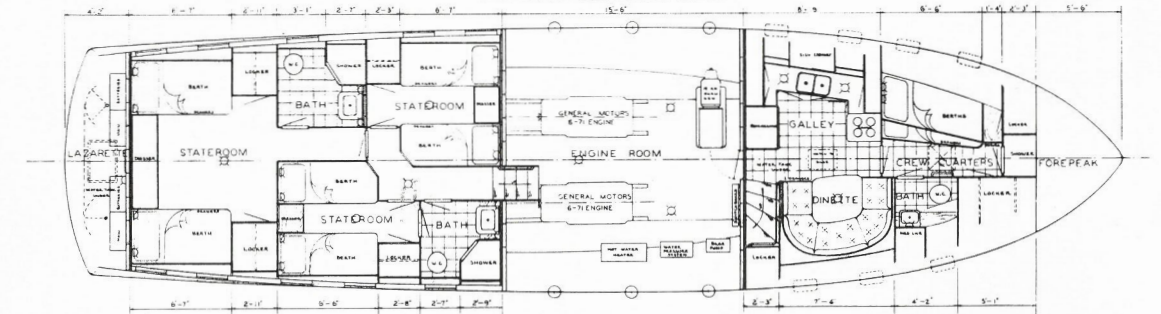
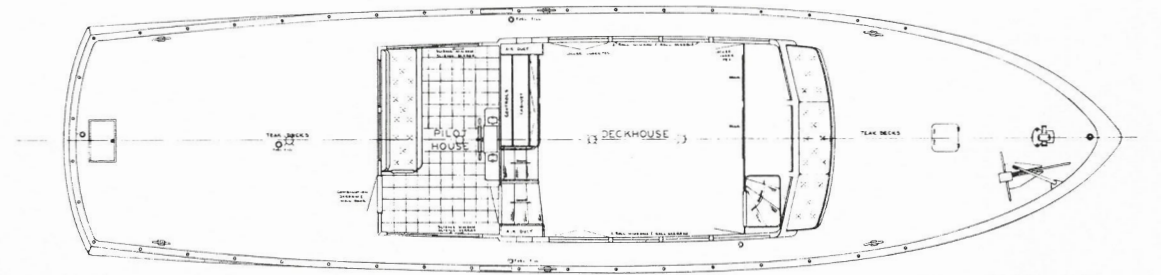
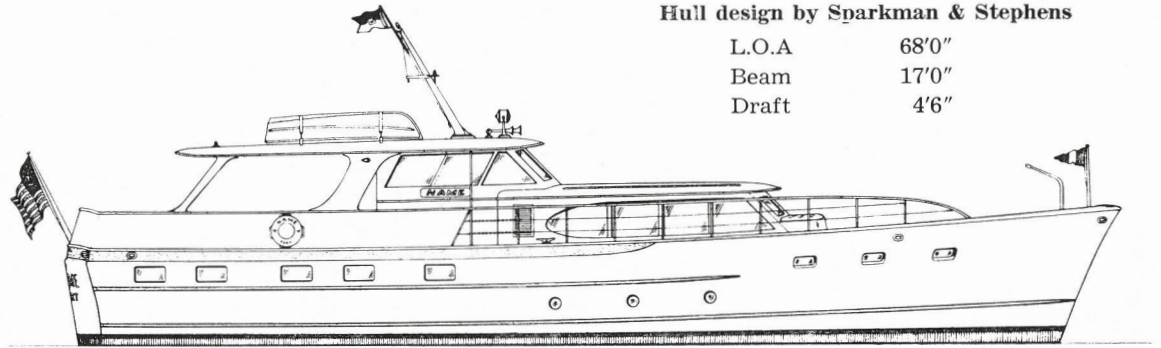
Fully Equipped

The ABLE LOVE is equipped for all-weather operation and safety. She features a Bendix auto pilot, Pearce Simpson Model 150B radio telephone, Bendix DI-5 depth indicator, Sea Slave public address and foghorn system, White wind indicator, two Danforth anchors and an Onan 10 KW generator.

All appliances are built-in including an 18 cu. ft. refrigerator freezer combination. Aluminum steps have been installed at the stern on the port side.

Hull design by Sparkman & Stephens

L.O.A	68'0"
Beam	17'0"
Draft	4'6"



New 65' Steel Cruiser Is Florida Bound

Warmer southern waters are the destination of the newest steel cruiser by Burger. Launched in early May, this 65 footer was built for a Florida yachtsman. She's designed for extended cruising and sports a fishing cockpit aft.

Hi Fi and Intercom

Congeniality and comfort will be constant cruising companions on this richly appointed yacht. The deckhouse is beautifully finished in mahogany with a new parchment finish. A Hi Fi system with speakers located throughout the ship is installed in the deckhouse. The stairway from the deckhouse forward to the galley-dinette spaces is covered by a sliding hatch for greater privacy.

The owner's and guests' staterooms, the dinette and the pilot house are all connected by a four station intercom system. There



This 65' steel Burger for a Florida yachtsman is fully air conditioned and sports a fishing cockpit aft.

are two full baths in the owner-guest quarters.

Elegant After Deck

The after deck is very nicely done . . . sliding glass windows on the port and starboard . . . Dacron storm curtains aft . . . upholstered deck corner seats . . . a built-in bar with stainless steel sink and refrigerator.

With a 16' beam and 5' draft,

this 65 footer is powered by twin GM 6-71M engines that develop 270 hp each. She'll develop a top speed of 15 knots with a cruising speed of 13 knots.

Equipment includes a 10 KW Onan generator, a Pearce-Simpson 132A radio telephone, a Bendix DI-5 depth indicator, a Sperry auto pilot and two Danforth anchors with an Ideal electric windlass.

Work Starts On Largest Aluminum Auxiliary Sloop

Up in the loft, the crew has started lofting a new sloop that will be the largest aluminum auxiliary ever built by Burger. Designed by Sparkman and Stephens, this 64 footer is being built for Mr. George F. Johnson of Ardmore, Pennsylvania.

Coming from the Burger Yard, she'll boast a fine heritage in sailing yachts. In 1957, the first aluminum auxiliaries built in the world, the 58' yawls DYNA and ARIA, were launched here in Manitowoc. Burger has also led in the development of steel auxiliaries of even greater size. The 98' ketch CURLEW III, the 68' ketch PANDORA IV and the 90' ketch SEA STAR were built at the Yard in recent years.

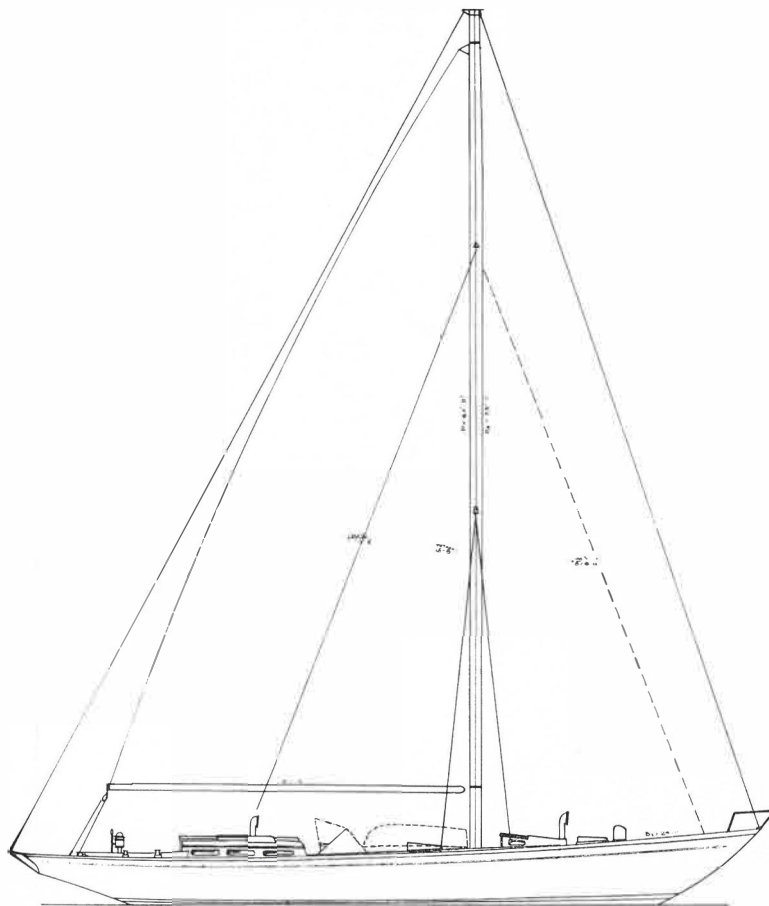
Racing Yacht

East Coast sailors beware! Mr. Johnson's sloop will be an able contender in many of next season's major racing events including the Bermuda and Annapolis contests. Mr. Johnson also intends to cruise extensively. While at this time plans are not definite, a cruise to England is likely.

The architect's preliminary plans indicate the sloop's hull will have an overall length of 64'4" with a 14' beam and an 8'10" draft. Her aluminum alloy hull offers the many advantages of welded metal construction. Maintenance is easy and much more economical. She'll have a permanently dry bilge and hull strength is superior. Of course the biggest advantage is the weight factor of the aluminum.



DYNA, shown above, was the first aluminum auxiliary built in this country. This 58' yawl was launched at the Yard in 1957. Her impressive record is sailing proof of the advantages of aluminum for sailing yachts.



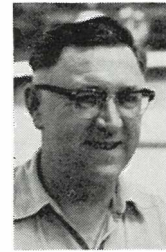
Here is Sparkman and Stephens preliminary profile plan of the new 64'4" aluminum auxiliary sloop being built by Burger for Mr. George F. Johnson of Ardmore, Pennsylvania.



Under the direction of Burger's chief draftsman and designer, Ray Franz, left; Howard Lodl and Edward Vetter apply their skill in lofting out the new aluminum auxiliary, largest ever built at the Yard.

Heads Up Burger Finishing Crew

If you ask Ed Shimanek what his job is, you'll get a clear, right-to-the-point answer . . . "to see that each boat is finished-off so the owner gets exactly what he wants." When considering the hundreds of custom features and special installations involved in building yachts that average 70' in length, you quickly realize that Ed's job as foreman of the finishing crew is a mighty exacting and complicated task.



Working with a Burger designer, each owner develops the interior arrangement that fits his way of life. It's Ed's job to help translate these plans into beautifully finished quarters with the spaciousness and comfort the owner expects.

No Mass Production

There's nothing routine about the work day of men on the finishing crew. Each boat they tackle is a little different from the last. Room sizes change . . . different types of equipment must be installed . . . special shelves and cupboards are called for. Ed's crew has pioneered in "building-in" equipment which enhances the uncluttered line of Burger interiors. Television sets, radios, Hi-Fi systems and intercoms are securely installed without reducing living space.

Ed is a 16 year veteran of the Burger Yard. He started here after his return from the service in 1946. Ed lives in Manitowoc and devotes "all the time I can" to fishing and hunting. His wife is also an avid fishing fan.

SUITSUS III

(Continued from page 1)

beautifully furnished yacht was done for Mr. Voight by John Ullmann and Associates of New York City. Because of the great interest in the Burger 57, the next issue of Yard News will feature a photo story on this just launched cruiser.

OUR DEEPEST SYMPATHY

We wish to express the deepest sympathies of all of us at the Burger Yard to the family of Mr. J. Ross Castendyck. Mr. Castendyck was recently called in Florida. We know his many friends join us in expressing our great admiration for this yachting comrade.