



BURGER 112' RPH MOTOR YACHT

## LIMITLESS DESIGN

Start here. Give it the custom touches and grand statements that create a Burger in your own personal style. Start here for a Burger that's uniquely yours **for a lifetime of journeys.**



# INTRODUCING THE BURGER 112' MOTOR YACHT

The Burger 112 Raised Pilot House Motor Yacht is a stately and sleek custom yacht. This is a Burger for adventure and exploring. She's modern, yet maintains classic artistry. Work with Burger to customize her for your unique requirements — a collaboration that combines your mission with our heritage.

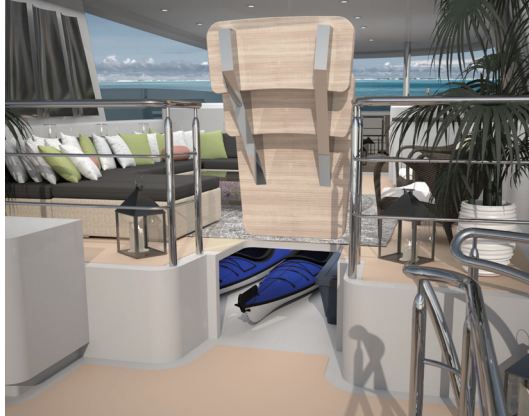
Imagine what you can build — dreams, getaways, the freedom of being at sea with no land in sight, an heirloom and a lifetime of memories crafted as a member of the Burger family.



# START YOUR JOURNEY

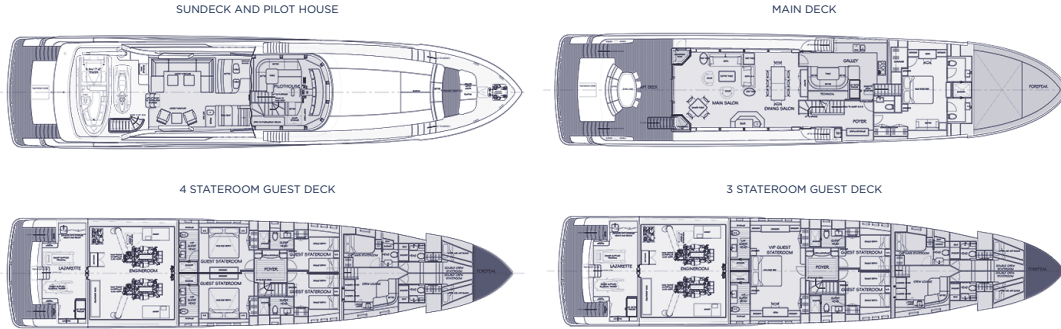
Designing and building a Burger is a partnership. One in which your lifestyle and cruising expectations are incorporated into your very own, custom built yacht. The Burger 112 RPH features expansive interior and exterior spaces for relaxation and fun with friends and family.

With salon spaces to entertain and guest decks for privacy, this is a Burger over which you have as much control as you want. Building your yacht is a joyous journey and we'll join you, every step of the way.



## STYLE. POWER. OPTIONS.

The Burger 112 has a top speed of 22 knots and a cruising speed of 18 knots. All available in comfort and a style you complete with Burger's design team. This custom yacht will be crafted to your specifications by Burger's experienced and meticulous team. Start here and finish with the adventure of a lifetime.



## 112' RPH MOTOR YACHT | SPECIFICATIONS

LENGTH OVERALL	112' 00" (34.14 m)
BEAM (MAXIMUM)	25' 00" (7.62 m)
DRAFT (HALF LOAD)	5' 06" (1.68 m)
GROSS TONNAGE (APPROX)	240 GT ITC
MAXIMUM SPEED (APPROX.)	22 Knots
CRUISING SPEED (APPROX.)	18 Knots
FUEL CAPACITY (APPROX.)	7,925 U.S. Gallons (30,000 L)
FRESH WATER CAPACITY (APPROX.)	1,200 U.S. Gallons (4,540 L)
BLACK/GRAY WATER CAPACITY (APPROX.)	1,400 U.S. Gallons (5,300 L)
EXTERIOR DECK AREA	1,367 Sq. Ft. (127 m <sup>2</sup> )
INTERIOR AREA	2,378 Sq. Ft. (221 m <sup>2</sup> )
NAVAL ARCHITECT	Burger Design Team/Gregory C. Marshall
INTERIOR DESIGN	Burger Design Team/Gregory C. Marshall
CLASS	ABS/MCA

# BURGER

## PERSONALIZED. PRIVATE. CRAFTED FOR YOU.

JOIN THE BURGER FAMILY. **LIVE A LIFE WITHOUT LIMITS.**

Email us at [Limitless@BurgerBoat.com](mailto:Limitless@BurgerBoat.com) or call +1 920-686-5117.

[BURGERLIMITLESS.COM](http://BURGERLIMITLESS.COM)

