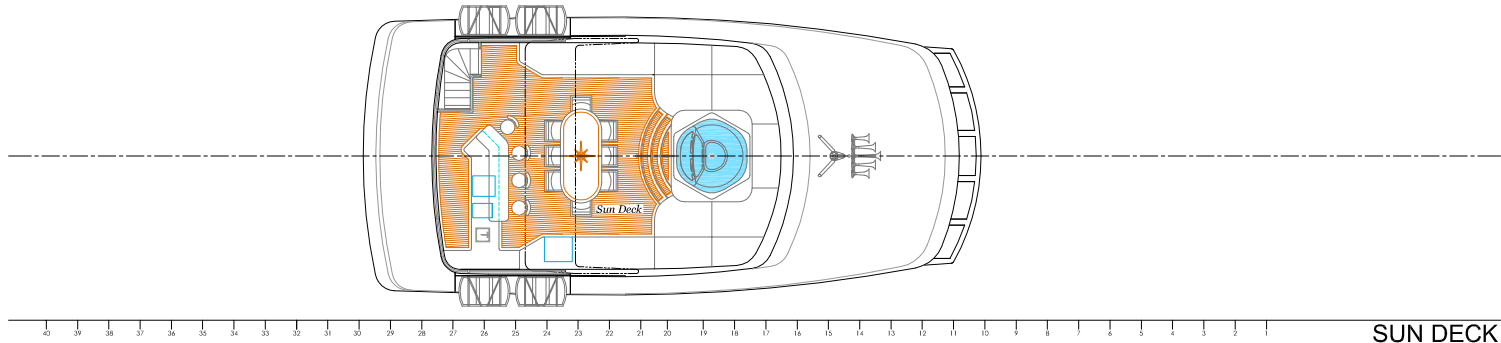
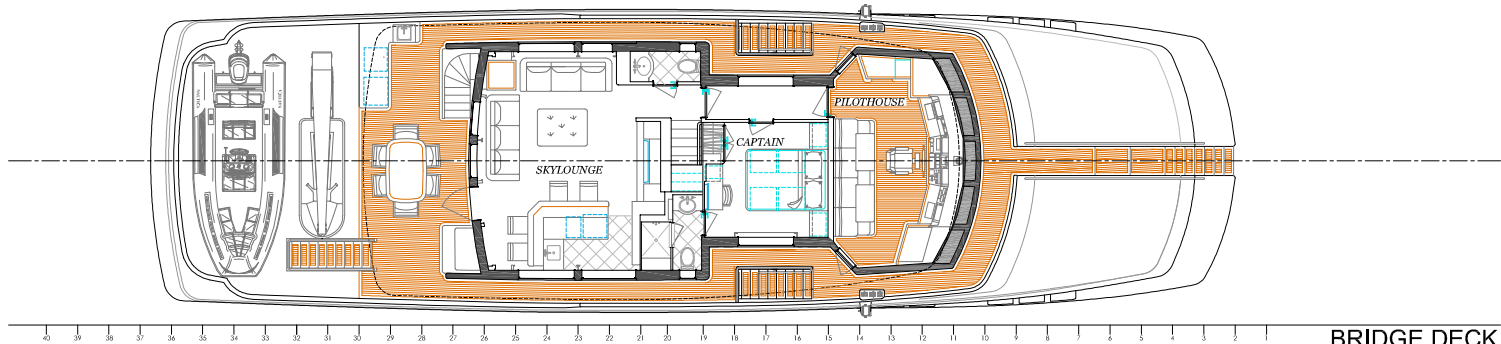


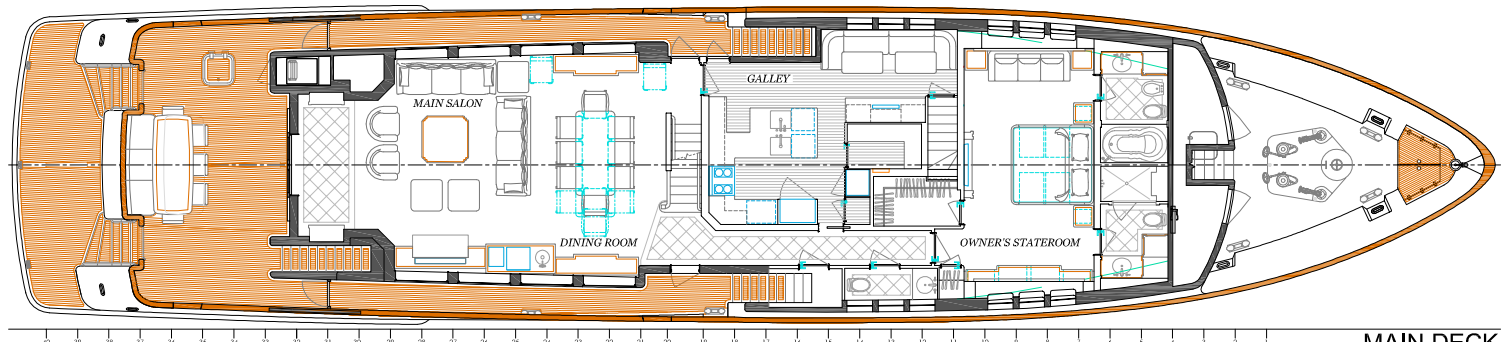
PROFILE



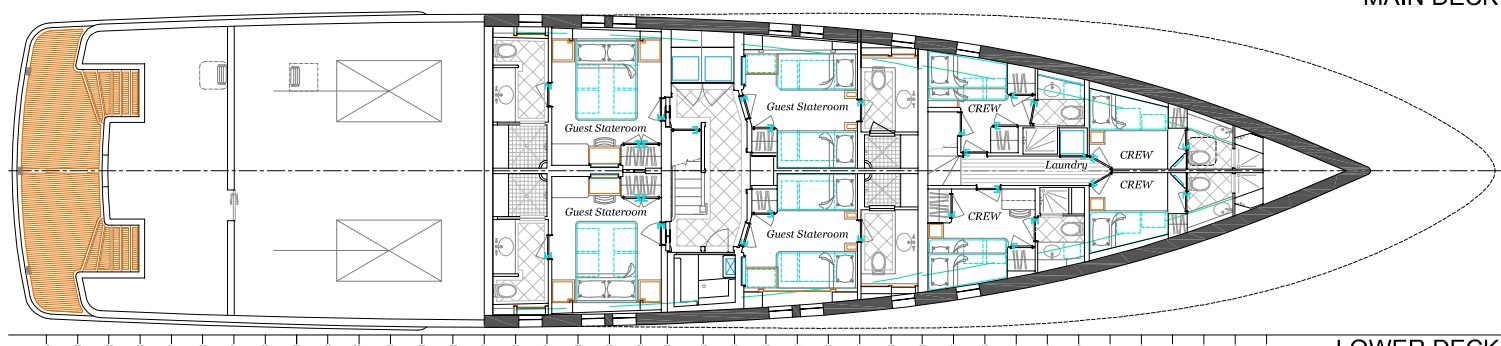
SUN DECK



BRIDGE DECK



MAIN DECK



LOWER DECK

39M TRI-DECK MOTOR YACHT
 LOA: 38.5M (126'-4") DWL: 34.2M (112'-4") BEAM OVERALL: 8.4M (27'-5") DRAFT (HALF LOAD): 1.9M (6'-4") DRAFT (FULL LOAD): 2.1M (6'-10")

